

Boat Specification & Equipment List



| | | |
|---|---------------------|---------------------|
| JUPITER BARGE Square Enclosed Stern | 70X 12FT | Tyler Wilson |
| MODEL & TYPE | SIZE | HULL |

Shell Specification: Hull Made by Tyler Wilson

- Length: 21.33 (70ft) → / Width 3.648mtr (12ft). Gunwales 1500mm above base plate and 250mm wide.
- Plate thickness: Base 10mm / 6mm below gunwales / 5mm cabin sides / 4mm roof.
- Stern: Approx 9ft-2.736m Cruiser Enclosed Square Stern Deck, incorporating storage/locker seats, with off-set double doors & sliding hatch, hydraulic steering and a Sapele hard wood, hydraulically lowering & rising wheel house.
- Bow Deck: Approx 5ft 10"-1.77m with double hatch-style doors from master bedroom for ventilation and emergency access.
- Electric Anchor Windlass: A Maxwell HRC10 electric anchor windlass which can be controlled from the stern and the bow.
- Bow Thruster: A Vetus BOW95/12 bow thruster has been fitted to help you control this beast of a boat. All hulls are fitted with a bow thruster tube as standard.
- Hatch-Style Doors: Port and starboard side in the saloon.
- Windows: Double glazed windows From Channel Glaze, to reduce noise & heat loss and to be more energy efficient.
- Electric roof lights: Webasto Blue Sky electrically operated sky lights have been fitted, 1 in the galley, 1 in the saloon & 1 in the master bedroom to increase ventilation and natural light.
- Roof Vents: Vetus Stainless 316 Steel 6" x 6" Roof mounted mushroom vents.
- Fully insulated: 95% closed cell spray foam insulation.
- Gas Locker: On stern deck with space for two 13kg gas bottles.
- Weed Hatch: Quick release
- Bollards: 6 x 316 marine grade stainless steel, Vetus mooring bollards are fitted between the stern, mid ships and bow.
- Handrail: Port and Starboard, 316 heavy duty Stainless Steel Handrail on the roof.
- Sapele Wheelhouse: Hydraulically raising and lowering roof with electric sliding hatch and hinged windows for clearing under low bridges.

Exterior finish

- Colour: Main cabin is shaded off white with navy blue pin stripes and light blue D-bar trim. Satin navy blue below the gunwales with light blue D-bar trims again. The stern is navy blue above the gunwales with white block, navy blue and light blue trim.
- Anodes: 4x 4kg zinc type sacrificial anodes.
- A Vetus, 316 stainless steel Headlight & Double Trumpet Horn, with chrome navigation lights.

Equipment Specifications

- Engine: A powerful Vetus VH4.80: 80hp/59kw engine (5-year warranty) with twin 115amp alternators and PRM280 Hydraulic Gearbox, keel-cooled with 2 skin tanks. All engine related equipment is Vetus (carrying 3-year warranty).
- Generator: (Optional) Vetus GLX 65S, slow revving, 6.5kva integrated diesel generator.
- Control Panel: The control meters are set into an oak console
- Stern gear: Vetus water-cooled twin lip seal, very low maintenance “no more greasing the prop shaft before every trip”.
- Integral Diesel Tank: Approximately 330gal/1500ltr.
- Bow thruster: Vetus Bow 95/12
- Anchor windlass: A heavy duty Maxwell HRC10 electric anchor windlass is fitted to the bow, can be controlled from the bow and the stern.
- Heating:
 - Webasto Pro 90, 9.2kw diesel central heating supplying warmth throughout the boat, through Aldi fin-rads hidden in vented boxing.
 - A room temperature control dial is fitted for total heat control when you're on the boat.
- A frost-stat is fitted for when the temperature drops below 3 degrees protecting the inside of the boat from frost.
- Gauges: Water, Waste & Diesel Tank level indicators.
- Multi Fuel Stove: A Morso Squirrel in a fire place with mantle, 4.5kw of heat.
- Fresh water:
 - A 800ltr (approx) stainless steel water tank
 - Supplies a powerful Jabsco Paramax 4+ water pump
- Hot water:
 - 100ltr SureJust calorifier/ hot water tank, heated by the engine, Webasto diesel heating and 240v 1kw immersion heater.
 - Electrics: 240v AC and 12v DC electrical systems are fitted throughout.
 - Including a 240v land line hook up connection.
 - VETUS 3000w Combi-Gamma inverter/charger, with 120amp Charger.
 - 240v sockets throughout
 - 5 x 220amp AGM leisure batteries.
 - 1 x 105amp engine starter battery,
 - LED low energy lighting throughout.
- Black Water Tank: Approx 215 litre Vetus Holding Tank
- Gas: Aldi bubble gas leak detector is included and Opso regulator fitted.
- Full cruising kit: Including 2 x bank pins, 1 x lump hammer, 2 x mooring chains, water conservation key, windlass, 6 x side fenders, 3 x 10 meter rope, front V fender, rear extended button fender.
- Cruising Light Pack: Navigation lights port & starboard, horn and headlight.

- Finishes:
 - Ceiling is tong and groove panelling, spray finished in satin Jasmine white.
 - Upper cabin sides are birch ply, finished in Satin Jasmine White.
 - Under gunwales is Oak veneered birch ply matched boards, spray varnished with a clear satin varnish.
 - Solid Oak trim and window surrounds are varnished

INTERNAL REVERSE LAYOUT

Flooring

Luxury Karndean Design flooring throughout the boat.

- Galley: Ferra with feature strip
- Saloon and corridor: Spanish Cherry (parquet)
- 2nd Bedroom: Spring Oak (Parquet)
- Bathroom: Graphite with grout feature strip.
- Master Bedroom: Spring Oak (Parquet)

Interior Finishes

- Curtains on stainless steel curved rails.
- 2nd Bedroom with Rock and Rolla, ¾ double bed/couch, fitted with made to measure cushions.

The Utility Room

- Integrated washer/spin dryer and tumble dryer
- Installed under a solid wood worktop.

The Galley

A beautifully bespoke painted and curved galley, made by Nottingham Boat Co, with stunning Sile-Stone, slate style, ceramic worktops creating a useful breakfast bar with centre shelf (worktops guaranteed for 25 years).

- Karndean Design Flooring: Ferra with feature strip
- Integrated separate fridge and freezer, high level single oven and grill, high level microwave and 4 burner lateral gas hob with wok burner.
- Copious amounts of storage, to include 2 x 930mm curved corner units, 3 x 400mm base units, 3 x 300 mm curved base units, 2 x 200mm rack base units,
- 1 x 800mm draw unit.
- 1 x wine cooler.
- Stainless Steel sink with mixer taps.
- Hidden Re-cycling pull out bins
- Storage in steps.
- 2 x arch top single glazed windows.
- 1 x Webasto Blue Sky, electrically operated skylight.



The Saloon.

- 2 x Side hatches, 4 x arch top double glazed windows & 1 double glazed porthole in the hallway.
- 1 x Webasto Blue Sky, electrically operated skylight.
- Karndean Design Flooring: Spanish Oak (Parquet)
- Multi fuel stove on a ceramic slate style plinth with display cabinets & shelving located on the centre line of the boat against the bathroom bulkhead.
- DVD and 30" smart TV unit installed on the port side of the fire place in fitted under gunnel units with loads of storage.
- Starboard side is a superb fitted under gunnel drinks cabinet.



The Second Bedroom/Office

- Entrance door in solid oak with opaque glass, (sliding door).
- 1 x Double glazed porthole
- Fitted luxury Sofa/3/4 double bed (Rock and Rolla Design)
- Fitted office desk with storage
- Karndean Design flooring: Parquet Spring Oak



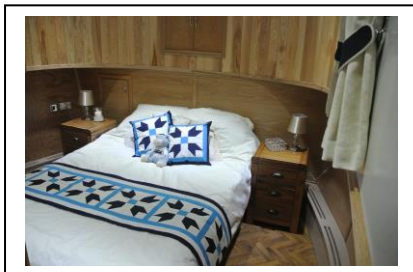
The Bathroom

- Walk by, side entrance, with solid oak with opaque glass, sliding door.
- Karndean Design flooring: Graphite with grout feature strip
- Large 1200mm x 800mm shower enclosure with thermostatically controlled mixer & large fixed remote type shower heads & finished in a choice of Bushboards.
- Our hand built painted bathroom suite with vanity unit & porcelain washbasin, mixer tap & storage cupboard beneath. Matching panels & quartz worktop.

- 12V Pump-out toilet with macerator with approx. 215ltr holding tank situated in the bathroom cabinet.
- Towel rail.
- 12V Electric extractor fan.
- 1 x Double glazed stippolyte porthole

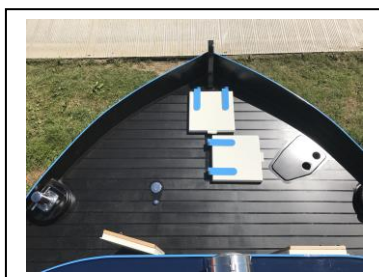
The Master Bedroom

- Walk by, side entrance, with solid oak with opaque glass, sliding door.
- Karndean Design flooring: Spring Oak (Parquet)
- Fitted king size ottoman double bed with luxury mattress – lift-up for ease of walk in under bed storage.
- Two bedside units to match your bed.
- A large double wardrobe with sliding mirrored doors and a hanging rail.
- Double hatch-style doors opening to the bow for ventilation & emergency access.
- 2 double glazed portholes.
- 1 x Webasto Blue Sky, electrically operated skylight.
- 2 x USB sockets & 2 x LED Reading Lights in Bedroom.



Bow Deck

- Non-slip paint is applied on stand on surfaces.
- Gas or storage locker.
- Anchoring & mooring cleat on port & starboard sides.



We reserve the right to alter and change our specification at any time without notice.
Copyright Nottingham Boat Company Ltd January 2018



E: info@nottinghamboatco.com

T: 0115 972 8125

W: www.nottinghamboatco.com

Made for living, built for cruising.